

Sugatsune America manufactures premium hardware with the highest quality materials, focusing on innovation and design. Established to inspire architects, designers and industrial engineers in North America to invent new solutions with a line-up of precision engineered hardware. Today, our product lines include more than 6,000 products.

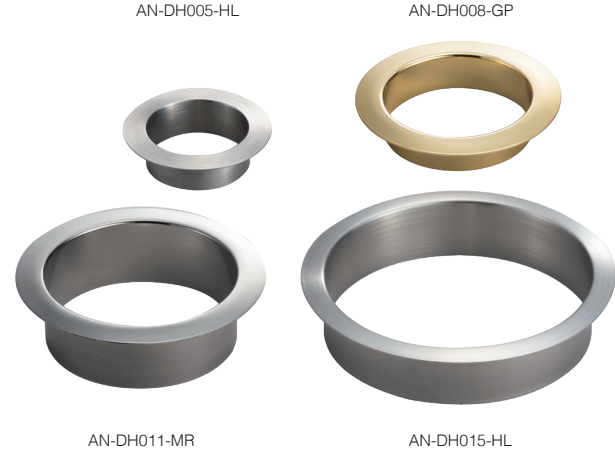
Sugatsune America, Inc. 18101
Savarona Way
Carson, CA 90746
Phone: 310-329-6373
Toll Free: 800-562-5267
Fax: 310-329-0819
E-mail: sales@sugatsune.com

Chicago Showroom
121 West Wacker Drive #1007
Chicago, IL 60601
Phone: 312-461-1081
Fax: 312-461-1082

Canada Office
3775 Boulevard du Tricentenaire
Montreal, Quebec H1B 5W3
Phone: 514-312-5267
Fax: 514-399-0538

www.sugatsune.com
www.sugatsune.ca (for Canada)



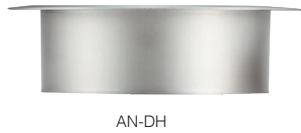


AN-DH005-HL

AN-DH008-GP

AN-DH011-MR

AN-DH015-HL



AN-DH



AN-LH

AN-DH, LH
 Multi-Purpose Grommet
 304 Stainless Steel
 Diameter: 4-7/16"~6-11/16" (112~170mm)
 Height: 14/16"~1-9/16" (22~40mm)
 Finish: Mirror, Satin or Gold



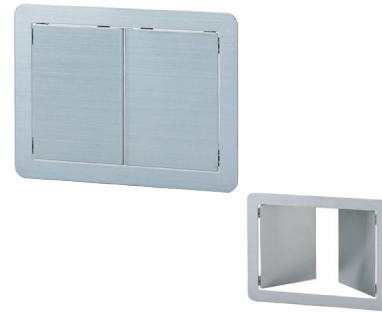
AN-KH
 Multi-Purpose Grommet
 304 Stainless Steel
 Size: 3-15/16"~6-11/16" x 3-15/16"~6-11/16"
 (82~170 x 82~170mm)
 Height: 1-7/16" (36mm)
 Finish: Satin



AZ-GD, AZ-SD
 Multi-Purpose Door
 304 Stainless Steel
 Size: 12-1/8"~15-1/8" x 9-7/32"~11-9/16"
 (308~384 x 234~294mm)
 Depth: 25/32" (20mm)
 Finish: Satin



AZ-HD
 Multi-Purpose Door (with Handle)
 304 Stainless Steel
 Size: 12"~15-1/8" x 9-7/32"~11-9/16"
 (308~384 x 234~294mm)
 Depth: 25/32" (20mm)
 Finish: Satin



AZ-DD
 Multi-Purpose Door (Double Door)
 304 Stainless Steel
 Size: 14-9/16" x 11-1/32" (370 x 280mm)
 Depth: 1" (25mm)
 Finish: Satin



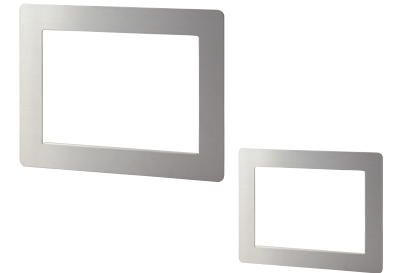
AD-DH015
 Multi-Purpose Lid
 Self-leveling Lid
 304 Stainless Steel
 Diameter: 6-11/16" (170mm)
 Height: 1-7/16" (36mm)
 Finish: Satin



AD-KH017
 Multi-Purpose Lid
 Self-leveling Lid
 304 Stainless Steel
 Size: 6-11/16" x 6-11/16" (170 x 170mm)
 Height: 1-7/16" (36mm)
 Finish: Satin



AD-GD
 Multi-Purpose Lid (Soft Close)
 304 Stainless Steel
 Diameter: 5-3/8"~6-11/16" (136~170mm)
 Height: 1-7/16" (36mm)
 Finish: Satin



AZ-ND
 Multi-Purpose Grommet (Square Bezel)
 304 Stainless Steel
 Size: 12-1/8"~15-1/8" x 9-7/32"~15-8/16"
 (308~384 x 234~394mm)
 Depth: 25/32" (20mm)
 Finish: Satin